

PART OF THE S.W. 1/4, OF SEC. 28, T.7N., R.1W., S.L.B. & M.

NORTH OGDEN
BLOCK 25, PLAT A

IN NORTH OGDEN CITY

SCALE 1" = 50'

TAXING UNIT: 10

SEE PAGE 31

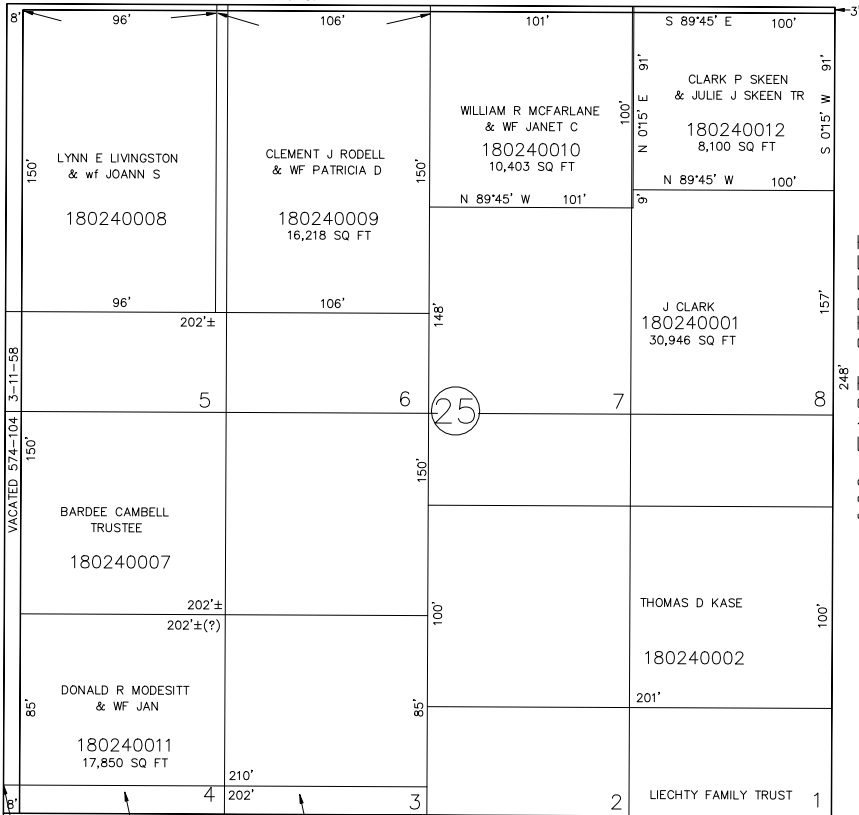
2750 NORTH STREET

S 89°45' E

VACATED 1516-191 5-5-87

399'
VACATED 574-104 3-11-58
550 EAST STREET

399'
VACATED 574-104 3-11-58
600 EAST STREET



SEE PAGE 23

SEE PAGE 25

2700 NORTH STREET

S 89°45' E
VACATED 808-204 5-24-65

SEE PAGE 17